



On Campus

◆ Getting to know Hat Yai Campus

Hat Yai Campus map

◆ Facilities on campus

Teaching and learning facilities

Accommodation

Computer Center

Library

Banking facilities

Post Office

Medical facilities

University Health Insurance Plan

Cafeterias and food courts

Transportation

Thai Driving License for Foreigners

Sporting facilities

Stores and bookshops

Prayer rooms for Muslims

Childcare services

International Students Association

International Affairs Office

International Students and Staff Office

International Convention Center

Security

◆ Contacting your family

◆ Useful telephone numbers on campus

◆ Checklist



CHAPTER 6



Getting to know Hat Yai Campus

PSU's main campus is located in the busy, commercial city of Hat Yai in Songkhla province. It is the largest city in southern Thailand, and it serves as an important commercial and transportation center. Local industries include rubber production and fish and shrimp farming. The current population in the greater Hat Yai area is about 800,000.

The beautifully-landscaped Hat Yai Campus provides a serene educational setting for 16 faculties, an International College, a Graduate School and two institutes. Information about the programs of study offered and other details about PSU are available at www.en.psu.ac.th and www.interaffairs.psu.ac.th.

Discover our picturesque Hat Yai Campus via a [Virtual Tour](#).



Hat Yai Campus Map



◆ Facilities on campus

At PSU, one can enjoy excellent teaching and learning facilities, outstanding sports provisions and the opportunity to join one of the multicultural student clubs and societies. Opportunities to attend plays, concerts, films, recitals, and other cultural gatherings are frequently available.

Services and General Facilities

- libraries
- dormitories
- campus-wide Wi-Fi Internet access
- Computer Center
- free campus bus service
- cafeterias and food centers
- full medical and dental facilities
- information centers
- counseling and student advisor
- campus stores and bookshops
- student clubs and societies
- banking facilities
- Post Office
- International Convention Center
- Muslim prayer rooms
- childcare services
- laundry services

Sporting Facilities

World-class sports infrastructure of PSU:

- Olympic-size swimming pool
- fully-equipped gymnasiums
- sport courts (tennis, basketball, badminton, volleyball, takraw, petanque)
- fitness center
- areas for aerobics, yoga and Tai Chi classes
- multi-purpose playing fields
- various sport clubs



Teaching and Learning Facilities

As a national research university, Prince of Songkla University has prepared comprehensive infrastructure for research works:

- a modern center of scientific equipment operating around the clock,
- a high-performance information technology network,
- an online library and an audio-visual system for learning,
- specialized laboratories in numerous fields.

Moreover, every faculty has its own specialized laboratories, modern equipped and open to all staff and students.

The Scientific Equipment Center is the center for modern scientific equipment for testing, use and maintenance of laboratory equipment in compliance with the university and industrial sector's needs. Outstanding services include a calibration laboratory for micropipettes and an Internet-controlled hi-tech oven. The Center also provides analyzing and testing services concerning Halal food standards and testing of bio-diesel quality. More details can be found at <http://www.sec.psu.ac.th/>.



CHAPTER 6 On Campus

The [Princess Maha Chakri Sirindhorn Natural History Museum](#) is administered by the PSU Faculty of Science. The Museum is responsible for promoting the Natural History of southern Thailand. Within this field the Museum works to coordinate the museums services with other museums at a regional and an international level. Its prime role is to research, educate and promote interest in and knowledge about the make-up and development of the universe, the earth, its plant and animal life, together with their biology and ecology.

The Museum houses collections of hundreds of thousands specimens and is considered to be among the largest museums of this kind in Thailand that curates almost everything from mammals to pollens, plus rocks and minerals. Certain sub-collections are unique, like the butterfly and aquatic fauna collections. Also, the Bat specimen collection is considered to be the largest in the country and the PSU Herbarium is one of the three herbariums in Thailand registered internationally.



Accommodation

Student Dormitories

Foreign students will be accommodated in rooms with other students of the same gender, in dormitories on the five PSU campuses.

Alternative Accommodations

Some foreigners may opt to lease housing in town. Most apartments in Hat Yai and the surrounding areas are similar to studio apartments – a single room with a restroom and balcony. Houses may also be rented, if you let your faculty's contact know well in advance.



Computer Center

PSU Computer Center offers services for all and is open daily from 08:30 to 22:30. Assistance can be sought from the Help Desk from 08:30 to 16:30 on weekdays. During vacation and examination periods, the opening hours are usually adjusted. A PSU Passport (Username and Password) is required to access the university [Student Information System \(SIS\)](#). To obtain a PSU Passport, one should contact the Computer Center or their contact at their respective faculties. PSU Passport is also needed to apply for a university e-mail account. A computer repair service is also available at the Computer Center.

Campus-wide Wi-Fi Internet and LAN are readily available.



Library

As the sources of information and knowledge for all, PSU Hat Yai Campus is managing two main libraries: Khunying Long Athakravisunthorn Learning Resources Center and the Medical Library. Each library provides full range of services to staff, personnel and students of the University, as well as to the general public. Moreover, most faculties also have their own specialized libraries. However, specific permission is usually required.

The [Khunying Long Athakravisunthorn Learning Resources Center](#) is the university's central library in Hat Yai Campus. A large collection of English language reading materials is available. Apart from the numerous collections of books, academic journals and magazines, the library also provides online catalogs, Internet access, an audio-visual system, a movies theatre and a karaoke room.

The opening hours are as follows:

Semesters 1&2	Monday-Friday	08.30-22.00 hrs.
	Weekend	09.00-19.30 hrs.
2 weeks before final examination	Monday-Friday	08.30-23.30 hrs.
	Weekend	09.00-21.30 hrs.
Summer semester	Monday-Friday	08.30-19.00 hrs.
Vacation (semester break)	Monday-Friday	08.30-16.30 hrs.

The central library also operates an on-line system for materials searching (e-databases) and offers a large variety of e-books and e-journals.

Moreover, most faculties also have specialized libraries.



Banking Facilities

The Siam Commercial Bank (SCB), next to the President's Office Building, PSU Hat Yai Campus, offers a full range of services, and is open from 08:30 to 15:30 on weekdays.

There is also a minor branch of the Bangkok Bank at Songklanagarind Hospital.

ATMs are available at several locations on campus.



Post Office

The university's Post Office, located on the ground floor of the Sports Complex Building, PSU Hat Yai Campus, is open from 08:30 to 16:30 on weekdays and from 09:00 to 12:00 on Saturday.



Medical Facilities

PSU is the only university in southern Thailand that has four medical facilities on campus!

PSU Hat Yai Campus has the biggest and most specialized general hospital in the region, namely Songklanagarind Hospital, a Dental Hospital, a Traditional Thai Medicine Hospital, and a Veterinary Hospital. Moreover, there is also a Pharmacy on campus, which is run by the PSU Faculty of Pharmaceutical Sciences. Therefore, our students and staff are provided with outstanding medical and dental services.

Even though international students are required to have health and accident insurance from their own countries before coming to PSU, one will obtain a minimum coverage university health and accident insurance for 300 Baht a year during registration (included in the tuition fee). This insurance will be effective only for the period of time that one is registered. The health insurance coverage includes free treatment (not exceeding 10,000 Baht per year) at Songklanagarind (PSU) Hospital. Accident insurance coverage includes free treatment at any public hospital, but is limited to a maximum of 12,000 Baht for each accident. At the Songklanagarind Hospital, students are not required to pay in advance, but in any other hospital they must pay the fees and submit claims to the PSU Student Affairs Division to obtain reimbursement. PSU foreign students can also opt for an extra insurance provided by Siam City Insurance Company.



Songklanagarind Hospital

Songklanagarind Hospital is a tertiary hospital, which dispenses outstanding health services especially for people in the South of Thailand. It is also a place for learning and practice for medical students/ residents/ fellowships and students of other health science disciplines. It is also a prime source of research for personnel of various health science professions. The hospital has won many awards, including the Thailand 5S Silver Award, Popular Award, Thailand Quality Class, and Thailand Kaizen Award 2010.

Medical clinics at Songklanagarind Hospital are open from 08:00 to 16:00 on weekdays, and 09:00 to 12:00 on weekends. An information desk is located near the main entrance. However, it is recommended that you call for an appointment before. Tel: 074 45 5000

An after-hour clinic operates from 17:00 to 20:00 on weekdays. Treatments are available for a reasonable extra fee.

Hospital's telephone: 074 45 5000; Emergency Room: Ext. 1700-1701



PSU Dental Hospital

The PSU Dental Hospital has been established as the center of dental Services for southern Thailand and a training place for dental students. It has become also the base for dental clinical research and dental technology development of the PSU Faculty of Dentistry.

The Dental Clinic is open on weekdays from 08:30 to 16:30 hrs. In addition, there is an after-hour clinic operating from 17:00 to 20:00 hrs. during weekdays; from 09:00 to 20:00 hrs. on Saturday; and from 09:00 to 17:00 hrs. on Sunday.

PSU Dental Hospital telephone: 074 287620, 074 42 9884, 074 28 7625



Traditional Thai Medicine Hospital

The Traditional Thai Medicine Hospital serves as an academic place of practice for students, who gain both professional practice and experience in the field, and provides quality services to all coming patients in: Thai medicine: clinical examination and diagnosis; Thai pharmacy: preparation of Thai traditional drugs, drug prescription, and medical advices on drug usage; Thai massage: therapeutic massage for both basic and complex diseases e.g. paralysis; Thai midwifery: Thai midwife services e.g. after-delivery course; Thai spa and other health programs using traditional Thai medicine, such as herbal sauna, Tard-chao-ruan (body elements) analysis and hermit's exercise.

The hospital is open from 8.30 to 16.30 hrs. on weekdays and from 8.30 to 17:00 hrs. on Saturday.
Telephone: 074 28 2710



Basic Health Advice

* Tap water is usually not fit for consumption, except after boiling. Bottled water is widely available and can be delivered to where you stay. Ask a Thai friend to help you make the arrangements. In addition, you can find drinking water dispensers and vending machines on campus, too.

* Malaria and other mosquito-borne diseases, except Dengue fever, are not prevalent in southern Thailand, so there is no need to take malaria pills. Furthermore, malaria in this part of the world tends to be resistant to current anti-malarial drugs, and many of these drugs have negative side effects. Thai doctors are well-equipped to treat malaria, and Thailand has one of the best records for containing this disease. Mosquito repellent coils, electrical repellent devices, and standard mosquito netting can all be purchased if the mosquitoes really bother you. Another sensible mitigation is to be kind to the small lizards that share your apartment. They are effective and environmentally friendly insect repellants.

Cafeterias and Food Courts

Several food centers are present on campus. The two larger ones are the *Rong Chang Canteen (Elephant Canteen)* and the *Hospital Cafeteria*, located in the basement of the Songklanagarind Hospital. The Elephant Canteen is open from early morning to about nine in the evening and the Hospital Cafeteria is open from early morning until late afternoon. Besides, most faculties have their own food centers and several coffee shops are present around the campus.



The Good View Restaurant (Staff Club), opposite the university reservoir, is the only place on campus where alcoholic beverages are served. It is a relaxing and pleasant place with a beautiful view.



A Green Market is also available in the evenings of Monday, Wednesday and Friday. It is located near the Gate 109. One can buy fresh fruit and vegetables, fresh fish and seafood, and a vast diversity of ready-to-eat foods and delicious desserts.



Food in Thailand

Food is an integral part of all cultures, but in Thailand this seems to be even more apparent. Thai cuisine has quickly become internationally famous for its fascinating combination of ingredients and its tasty and unique flavors. Food in Thailand is delicious, inexpensive, and available almost everywhere. Like the diets of most Asian people, the Thai diet is centered on rice. Rice is available in many different varieties and is commonly consumed at every meal: breakfast, lunch, and dinner.

New to some will be the spiciness of the Thai food. While it is wonderfully tasty, it is often very hot. Chili peppers are used abundantly and may not always be apparent until a burning sensation overcomes you. Eating some plain rice will help to douse the fire more quickly than drinking water. When ordering, feel free to ask whether the food is spicy hot (*"phet mai?"*), or ask for it to be made not spicy (*"mai phet"*). Just remember that the Thai perception of spicy may be quite different from yours. In addition to a liberal use of chilies, southern Thai cuisine also uses turmeric, a yellow ginger-like root, for making curries. Additionally, there is a strong Muslim influence on local cooking, like for example roti and chicken with saffron rice.

Common Thai Food & Drinks

Common Thai Food & Drinks

Khao Mun Gai	- ข้าวมันไก่	- rice topped with boiled chicken			
Gai Tod	- ไก่ทอด	- fried chicken			
Khai Jiao	- ไข่เจียว	- an omelette			
Khai dao	- ไข่ดาว	- fried egg			
Khao moo daeng	- ข้าวหมูแดง	- shredded pork with egg and gravy on rice			
Khao pat gai	- ข้าวผัดไก่	- fried rice with chicken or (Koong-กุ้ง-Prawn) Khai-ไข่-Egg) (Moo-หมู-Pork)			
Pad Thai	- ผัดไทย	- Thai fried noodles			
Guay Teo	- ก๋วยเตี๋ยว	- noodle soup			
Tom Yam Koong	- ต้มยำกุ้ง	- a hot and sour shrimp soup with mushrooms (Pla-ปลา-Fish) (A han ta le-หอย-Seafood)			
Som tam	- ส้มตำ	- a delicious spicy salad of papaya or green mango, carrots, garlic, lime juice, and chili, as well as sugar, peanuts, tomatoes, and small crabs			
Gaeng juet	- แกงจืด	- clear soup with minced pork and vegetables			
Gaeng som	- แกงส้ม	- a very sour and spicy southern Thai curry with fish, shrimp and vegetables			
Khao yam	- ข้าวต้ม	- rice, vegetables, mixed with dried shrimp, shredded coconut and roasted coconut slices, it is usually served with "Bu du," a dark brown sauce made of preserved fish			
Mang sa wi rat	- มังสวิรัติ	- Vegetarian	Nam Som	- น้ำส้ม	- Orange juice
Nam plao	- น้ำปลา	- Drinking water	Nam cha	- น้ำชา	- Tea
Cha dam yen	- ชาดมเย็น	- Iced tea	Cha yen	- ชาเย็น	- Iced tea with milk
Ka fae	- กาแฟ	- Coffee	Nam manao	- น้ำมะนาว	- Fresh lime juice

Transportation

For most foreign students staying on campus, transportation is of no major concern as everything is not too far. Walking is a pleasant suggestion, since the campus is beautifully landscaped, and most locations can be reached on foot in about 20 minutes. Cycling is also a convenient mode of travel.

A free electrically-operated Campus Bus Service operates daily from 07:30-17:30 hrs. except Sundays, national holidays and summer break. Maps for the campus bus routes can be found at each Bus Stop. There are three different routes on campus as the following maps:



Tuk-tuks and motorcycle taxis, alternative forms of Thai transportation, can be found near the Rong Chang canteen (Elephant Canteen), by the PSU Hospital entrance, or outside the main campus entrance.

Moreover, taxis, vans and buses are available for transportation to destinations outside Hat Yai.

If you do have the opportunity to drive a motor vehicle, you should keep in mind that in Thailand one drives on the left side of the road. Also, you should be aware that driving behaviors of Thai motorists are somewhat less restrained than what you may be accustomed to, so remain alert at all times. A pedestrian's right of way is not always acknowledged in Thailand, so caution is strongly advised when crossing a road.

Thai Driving License for Foreigners

PSU International staff and students in Hat Yai can obtain a Thai Driving License from Songkhla Land Transportation Office, which is on the road to Yo Island (Ko Yo), approximately 20 km. from Hat Yai. There are two cases as follows:

1. The first case is for foreigners who already got their own country driving license. If it is in English, they can submit a copy of it with the following documents to the Songkhla Land Transportation Office:

- a copy of passport and visa
- a copy of work permit (for employees)
- a certified residency letter from the Immigration Office
- a medical certificate

However, if their own country driving license is not in English, they must get a certified translation of it and submit it with other aforementioned documents.

2. The second case is for those who do not have their own country driving license. In this case, they must submit the aforementioned documents and take the written examination (in English or Chinese) and the driving test that is the same for all applicants.

For further information, please contact the Songkhla Land Transportation Office in person or by phone at 074 330253.



Sporting Facilities

At PSU, one can enjoy outstanding sports provisions: Olympic-size swimming pool, sport courts (tennis, basketball, badminton, volleyball, takraw, petanque), multi-purpose playing fields, fully-equipped gymnasiums, fitness center, areas for aerobics, Yoga and Tai Chi classes. Detailed information about most of the recreational facilities and costs can be obtained from an officer at the gymnasium between 08:30 to 16:30.



Stores and Bookshops

There are several convenience stores on campus, including 7-Eleven stores (open 24 hrs): one near Rong Chang cafeteria, one at the basement of Songklanagarind Hospital, one in the medical village, and two at the student dormitory area.

There are also two bookstores on campus: one at the Learning Resources Center and another near the Green Market not far from the Gate 109. Both carry more Thai than English language publications, but one can order the latter from both bookstores.



Prayer Rooms for Muslims

There are several designated rooms within the university that Muslim students can use for prayer, such as on the 2nd floor of the university's hospital. Friday prayer is held in the Gymnasium.



Childcare Services

The Early Childhood Development Center, operated by the Faculty of Nursing, accepts infants and toddlers ranging from two months to three or four years of age. Both short-term and long-term cares are available. Tel: 074 286590-3

The Sri Trang Nursery, under the Faculty of Medicine, accepts children from three month to two years old. Tel: 074 451847



International Students Association



The PSU [International Students Association](#) provides a wealth of opportunities for networking, socializing and making friends through social and cultural activities, sightseeing around Thailand and charitable actions. At times, international students have the chance to join cultural activities and sightseeing trips organized for groups of exchanged students visiting PSU.

International Affairs Office



The PSU International Affairs Office (IAO), located on the 3rd floor of President's Office Building, has an active globalization strategy, which has led to the establishment of more than 300 academic partnerships with universities and institutions from over 40 countries around the world. These partnerships facilitate student and staff exchange programs, double-degree study programs, joint researches and conferences, etc. PSU also offers scholarships and encourages international students to study at our university. Do browse through [IAO website](#) to learn more about its activities and partners.

International Students and Staff Office



The [PSU International Students and Staff Office \(ISSO\)](#), located on the third floor of the President's Office Building, provides guidance and assistance to all university's international students and foreign employees with regard to the immigration procedures such as visa extension, 90-day report and re-entry permit; health and accident insurance; as well as contacts with other PSU offices and outside companies for various services.

The 60th Anniversary of His Majesty the King's Accession to the Throne International Convention Center

The state-of-the-art [PSU International Convention Center \(PSUICC\)](#) is Thailand's newest international convention center and the largest in the country's southern region. The Center features splendid contemporary southern-style architecture, can accommodate up to 4,000 people and can be adapted to host everything from seminars and conferences to national and international trade fairs.

PSUICC is situated within Hat Yai Campus, on Punnakan Road. Moreover, PSUICC is equipped with ultramodern multi-media technology, which serves all types of activities. More information can be found at www.icchatyai.com.



Security

Prince of Songkla University has been doing its utmost in protecting its students, staff and facilities. In all five campuses, teams of security staff are at every gate, as well as throughout the campus to provide assistance, to monitor activities and in general to assure the well-being of everyone on campus. Security Office in Hat Yai Campus: 074 558863, 074 282190-1

❖ Contacting your family

Nowadays there are various ways to keep in touch with your family while you are abroad. Here are some suggestions for how you can contact your family and friends while you are in Thailand.

By telephone

This kind of communication is one of the most popular and fastest ways to contact your family in other counties. In Thailand, there are several telephone networks that offer the possibility for telephone users to call overseas at very cheap rates.

Hat Yai's area code is 074. To make a call to anywhere in Thailand, always add a preceding "0" to the fixed line/mobile number. For example, +66 74 123456 will be dialed locally as 074 123456.

The major telephone service providers are AIS, DTAC, and TrueMove. Thai prepaid SIM cards can be purchased in minimarts, mobile retailer shops, or telco service centers, all of which can be found on Central Festival's 3rd floor. Domestic calls usually cost only about 1 baht/min depending on your prepaid plan.

When you reach Hat Yai, you can buy a mobile phone sim card at the airport or in other places in the city or at PSU. There are three main operators who provide networks for mobile phone: AIS, DTAC and True Move H, who provide both pre-paid and post-paid system of telephoning. Moreover, there are two more networks providing overseas calls for both home and mobile phones namely, CAT Telecom and TOT Public Company Limited.

Here is the list of numbers to help you call abroad at cheap rates:

Network's Name	AIS	DTAC	True Move H	CAT	TOT
Overseas Digits	00500	004	006	001 or 009	007 or 008

How to call overseas:

Overseas digits (as above) + country code + area code + telephone number + call

Moreover, Easy Card is one more choice for oversea call. It is the legitimate phone card service licensed by the National Telecommunication Commission (NTC). You can apply for this card to make a phone call from all local numbers (fixed line) and every mobile network operators. For more details, please visit <http://www.easycard.in.th/>.

Please go to the following websites for regularly updated information:

AIS : <http://www.ais.co.th/00500/en/>

DTAC: <https://www.dtac.co.th/en/postpaid/services/004.html>

True Move H: <http://www3.truecorp.co.th/idd006/en/index.html>

CAT 001: http://www.catelecom.com/site/en/list_service.php?cat=561

CAT 009: http://www.catelecom.com/site/en/list_service.php?cat=562

TOT: <http://www.totnetcall.com/rateinternational.html>

By Skype

One can call to mobile phones or fix lines abroad using the Skype application.

You can call to mobiles and landlines from your computer or smart phone via Skype even if the receiver is not connected on Skype. This is another way to make low cost international calls to mobiles and landlines. The payment can be done via Skype Credit or, if you call a lot, you could save even more money with a subscription

By email

This is a fast way to communicate with other people, but the internet is required. If you do not have your own computer or laptop, you can use a computer provided at the Computer Center, located opposite the Pumpkin Building of Faculty of Science, or at the main library, Khunying Long Athakravisunthorn Learning Resources Center (the 3rd floor of LRC Building).

By mail

If you would like to send letters or parcels, there is a Post Office inside the campus, located on the ground floor of the President's Office Building, behind Siam Commercial Bank (SCB). You can choose to send your letter or parcel through the normal posting system, which takes more time to reach your home in another country but is cheaper, or by express mail service (EMS), which is faster but more expensive.

By telegram of fax

If you need to send some documents without using the internet, many photocopy shops inside or nearby the campus offer telegram or fax services. However, this kind of communication may be a little more expensive since it needs to connect on the telephone networks.

By social network

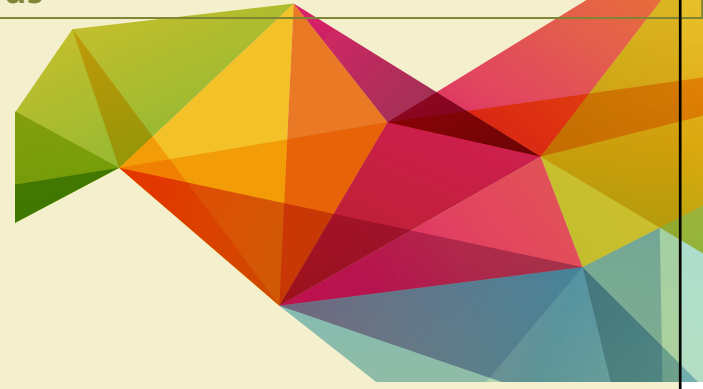
Here is the newest, easiest and most well-known method to keep in touch with people around the world. Nowadays, many people prefer using their smart phones with different mobile applications employed for communication, such as Line, Facebook, WhatsApp, WeChat, Facetime, Twitter, etc. Therefore, it is easy for users to connect with people over the world by first downloading the mentioned mobile applications to their smart phones. Then, one can create his/her own account for the selected application, and add his/her friends' account to the list in order to communicate with them.



❖ Useful telephone numbers on campus

Songklanagarind Hospital (at PSU)	074 455000
Emergency Room (at PSU hospital)	Ext. 1700-1701
Dental Clinic	074 287620, 074 429884, 074 287625
Security Office	074 558863, 074 282190-1
Housing	074 282174, 074 282179
Students Dormitory (no. 10 & 11)	074 282968
PSU Electricity Office	074 282180 (working hours) 074 284978 (out of working hours) 074 282187 (weekend and holiday)
PSU Waterworks Office	074 282182 (working hours) 074 284975, 074 284977 (out of working hours) 074 282187 (weekend and holiday)
Library (Learning Resources Center)	074 282352
Early Childhood Development Center (nursery)	074 286590-3
Sri Trang Nursery	074 451847
PSU International Affairs Office	074 446824
International Students & Staff Office	074 282968

CHECKLIST



- I learned about PSU Hat Yai Campus and facilities available
- I studied the campus map
- I know that I can contact the International Students Association, International Affairs Office or International Students & Staff Office for any assistance
- I learned how to contact my family while at PSU
- I noted the useful telephone numbers on campus

NOTES:



<https://en.psu.ac.th>



<http://interaffairs.psu.ac.th>

